

## What is Alpha-Stim?

Alpha-Stim® M is a clinically proven electromedical device combining microcurrent electrical therapy (MET) and cranial electrotherapy stimulation (CES) to treat acute, chronic, and post-traumatic pain, anxiety, insomnia and depression. Alpha-Stim has been on the market for over 35 years and has since provided relief to millions of people around the world, even when nothing else has worked for them.

More than 100 research studies on CES have been done with humans. A peer reviewed published outcome study has shown improvements in pain in 94% of patients studied. An additional 29 studies were conducted with experimental animals to ensure safety and efficacy.

Alpha-Stim treatments are cumulative; however most patients show at least some improvement after the first treatment. Alpha-Stim can be used as a first-line therapy or as an adjunct to pharmacotherapy (without polypharmacy effects).



## Alpha-Stim® for Animals

Cranial Electrotherapy Stimulation (CES)  
and Microcurrent Electrical Therapy (MET)

Ava Frick, DVM, CVC, FAIS  
Leading Authority in Veterinary  
Microcurrent Therapy  
Authorized Alpha-Stim Distributor

IVE, Inc.  
1825 Denmark Road  
Union, MO 63084  
636-583-1700

[www.alphastimforanimals.com](http://www.alphastimforanimals.com)



Manufactured and marketed by:  
**Electromedical Products International, Inc.**  
2201 Garrett Morris Parkway  
Mineral Wells, TX 76067-9034 USA  
1-800-FOR-PAIN (367-7246) in USA  
Tel: (940) 328-0788 (Outside USA)  
Fax: (940) 328-0888  
[www.Alpha-Stim.com](http://www.Alpha-Stim.com)

Alpha-Stim and the Alpha-Stim logo are registered trademarks, and LET NOTHING STOP THEM is a trademark of Electromedical Products, International, Inc. © 2017 Electromedical Products International, Inc. All rights reserved. manufactured under US Patents 8,612,008; 8,457,765; and 8,463,406.

REV A



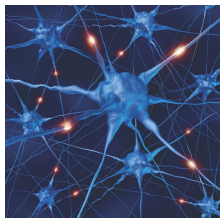
For Pain  
For Anxiety  
For Insomnia  
For Depression

Alpha-Stim®



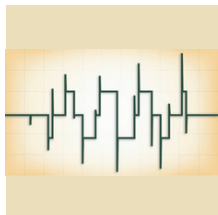
LET NOTHING STOP THEM.™





## THE FUNDAMENTALS: An Electrical Intervention

- The brain and nervous system function electrochemically and can be readily modulated by electrical intervention
- The patented waveform provides a wide range of biological frequencies that no other device can emulate
- Alpha-Stim impacts electrochemical function at the cellular level to reduce pain related to a variety of causes



## ALPHA-STIM ADVANTAGE: A Patented Waveform

- Effectively targets cell receptors, activating them through frequency matching in a manner similar to chemical ligands
- Delivers a very low level of current in pulsed microcurrents of less than one milliamperere
- The only rigorously tested waveform designed and refined to improve effectiveness



## THE RESULTS: Significant Improvement, Quickly, with Lasting Effect

As a leader in electrotherapy, Alpha-Stim has helped clinicians around the world offer fast, safe, and effective relief for patients suffering from pain from multiple sources—even when nothing else has worked.



## Using Alpha-Stim

Alpha-Stim is safe and easy for use clinically in a traditional or rehabilitation practice and by animal owners at home, in the barn, or on the road at shows. Alpha-Stim can be applied with the handheld probes, attachable electrodes (via the Alpha-Stim M) or earclips (via the Alpha-Stim M and Alpha-Stim AID). Because it is delivered subsensory most animals do not resist the therapy. A typical session can take from 10 to 30 minutes. Treatment protocols are easily adapted for many species. Built-in safety features automatically stop treatment if the device is not functioning properly. Devices can be rented or purchased by owners through veterinarians or an authorized distributor with a prescription.

It is effective in helping animals suffering pain from arthritis, back injury, surgery, trauma, or cancer. And for those exhibiting stress-related clinical signs associated with anxiety (pacing, cribbing, house soiling and destruction, self-mutilation, aggression, fearful behavior), insomnia (elderly pets, pacing and cognitive failing), and depression (loss of an animal friend or caretaker)

